

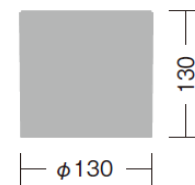
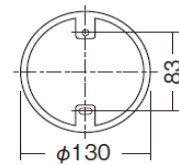
**Luminaire Type** : Ceiling Downlight

<b>Model Code</b>	<input type="checkbox"/> LLC-7090AU	3500K
	<input type="checkbox"/> LLC-7090YU	3000K
	<input type="checkbox"/> LLC-7090LU	2700K



### Technical Data

<b>Dimension</b>	: D.130/H.130mm
<b>Weight</b>	: 1.6 Kg
<b>Light source</b>	: LED
<b>Wattage</b>	: 13.8 W
<b>Lumen, Color temp.</b>	: 1150Lm(3500K) 1130Lm(3000K)/1110Lm(2700K)
<b>Beam angle</b>	: 60°
<b>CRI</b>	: 83
<b>Protection Class(IP)</b>	: IP65



### Component & Information

Aluminum die-casting luminaire body,  
marine-grade painting with stainless color  
Acrylic diffusion cover for LED  
Aluminum reflector cone, electrolytic polishing  
Tempered glass cover, clear  
\*Internal LED driver for 100~242V, Non-dimmable

### Feature

#### Dimensional balance of "1: 1"

With a dimensional balance of  $\Phi 130\text{mm} \times H.130\text{mm} = 1:1$ , designs familiar with architecture.

#### Double waterproof structure / IP65



#### <Primary waterproof>

The main body itself is also waterproofed by silicon gasket.

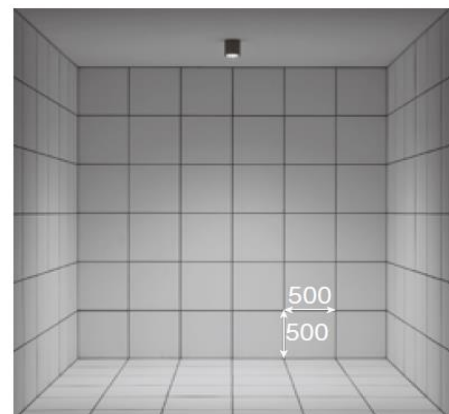
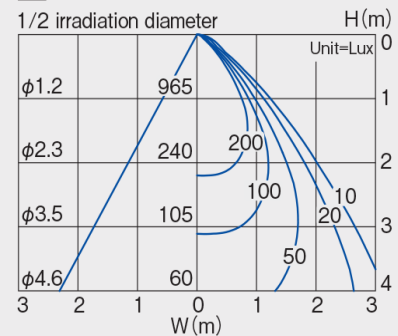
#### <Secondary waterproof>

LED light source and Internal LED driver are independently waterproofed.

#### Uniform light emitting

By using a highly diffusive light source module and reflector together, more uniform and beautiful light is realized.

### 60° 3500K/Ra83



Luminaire position:  
1500mm from wall, CH3000