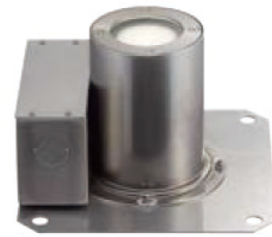


# Specification Sheet



**Luminaire Type** : Ground light

**Model Code**     **LLG-7165LUB**      2700K  
                           **LLG-7165YUB**      3000K



## ■ Technical Data

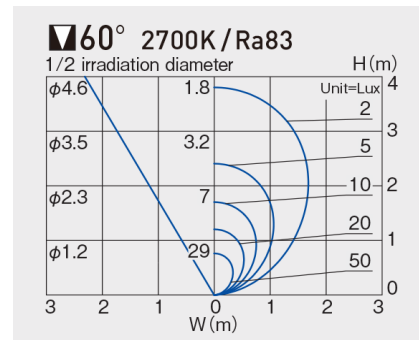
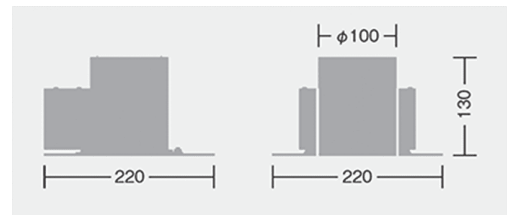
**Dimension** : W.220/L.220/H.130mm  
**Weight** : 2.3 Kg  
**Light source** : LED  
**Wattage** : 7.7 W  
**Lumen, Color temp.** : 63Lm(2700K/3000K)  
**Beam angle** : 60°  
**CRI** : 83  
**Protection Class(IP)** : IP67

## ■ Component & Information

Stainless steel housing, marine-grade black color painting  
 Aluminum reflector cone, chemical polishing  
 Stainless steel trim, hairline finish, Tempered glass cover, clear  
 Aluminum die-casting inner luminaire, with optical control lens

- \*Internal LED driver for 100~242V, Non-dimmable
- \*Two optional accessories can be used together.
- \*Non-slip processing of glass is available by custom order.
- \*Do not use in places to load such as vehicles.
- \*Do construction work on drainage treatment.

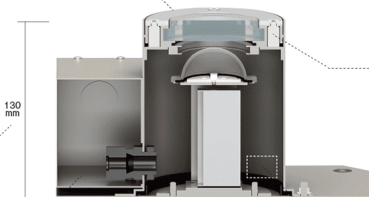
## ■ Feature



Small diameter form of φ100  
 Small diameter form is realized.

Fixture height 130mm  
 Ultra-thin size that is easy to use on artificial ground and paved areas around buildings.

Wiring box  
 Installation is simplified by separating the main body of the fixture from the wiring section. The wiring section is filled with resin (dollar included) to improve waterproofing.



Safe glass surface temperature  
 The glass surface temperature is lower than before, at 50° C or less. It is safe even if you touch it.



Double waterproof structure (IP67)

(Primary waterproof)  
 The fixture side is water-proofed with a watertight packing.

(Secondary waterproof)  
 The outdoor power supply is filled with resin, and the LED is coated with a moisture-proof coating to ensure high moisture resistance.

Contains anti-condensation agent  
 Prevents condensation caused by moisture infiltration over time.

